



NEWFOUND
PARTNERS

PARKVIEW
A MIXED-USE DEVELOPMENT



Parkview – Mixed Use Development



Executive Summary

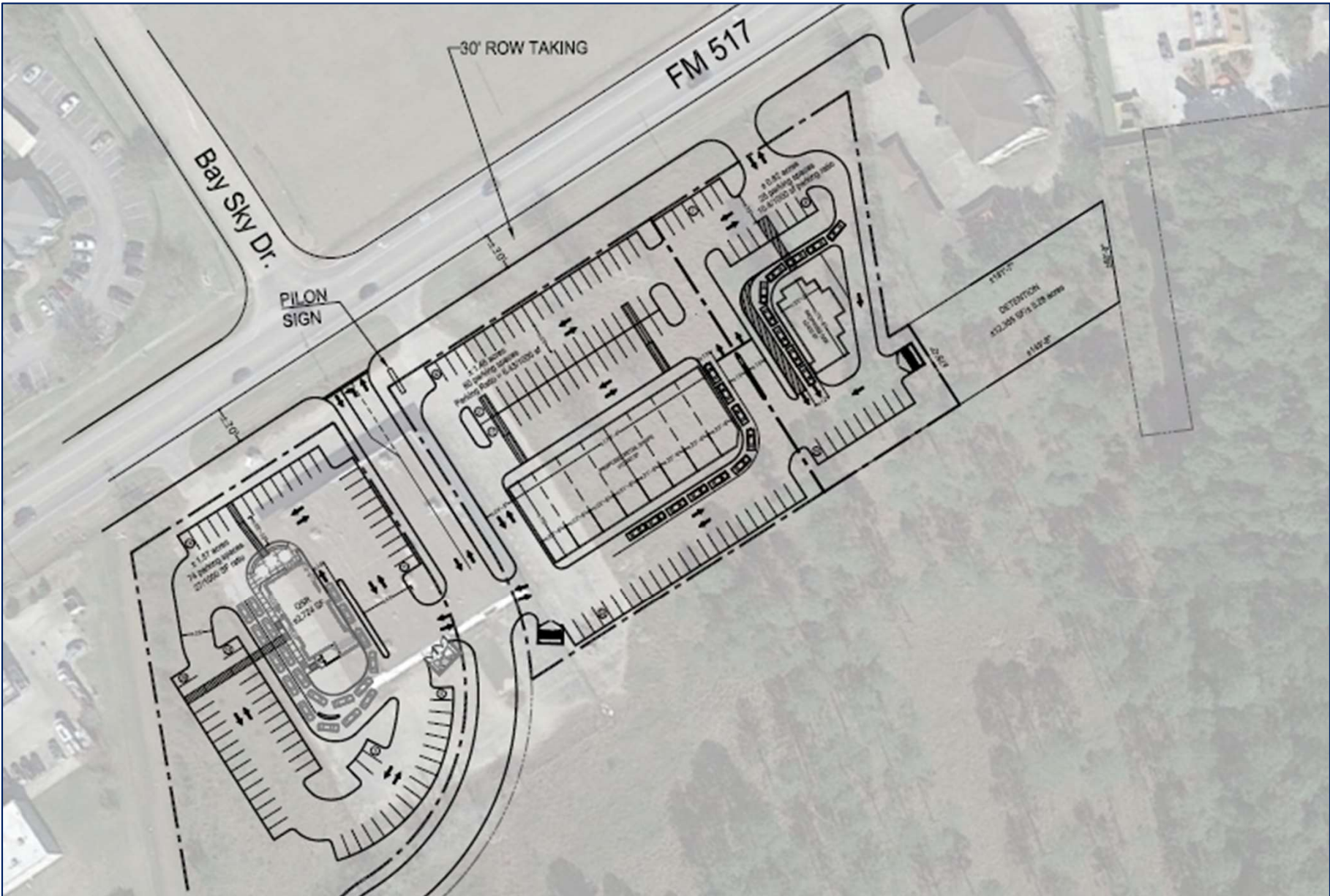
- New mixed-use development at corner of FM 517 and FM 646.
- Approximately 27 acres assembled via three acquisitions in 2022-2023.
- Will be developed into new retail, Class-A multifamily apartments, and public park space.
- Generous set backs and tree preservation for natural aesthetic.
- New access points on 517 and 646 for the Bentwood neighborhood.
- Will provide improved utility circulation to WCID water systems.
- Anticipated construction in mid-2024 (contingent on TXDOT).



Parkview – Mixed Use Development



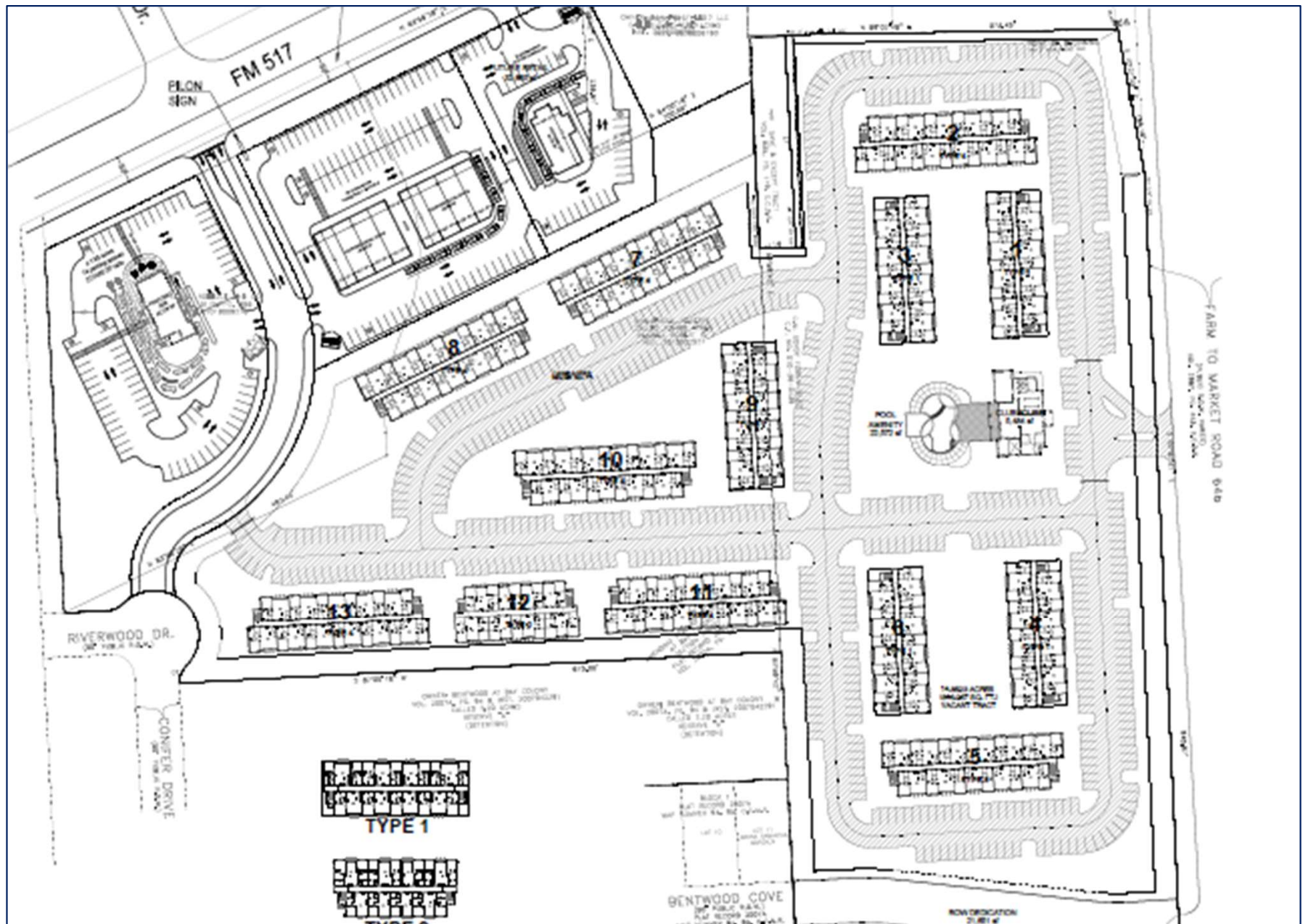
Retail Site Plan



Parkview – Mixed Use Development



Multifamily Site Plan



Parkview – Mixed Use Development



THANK YOU